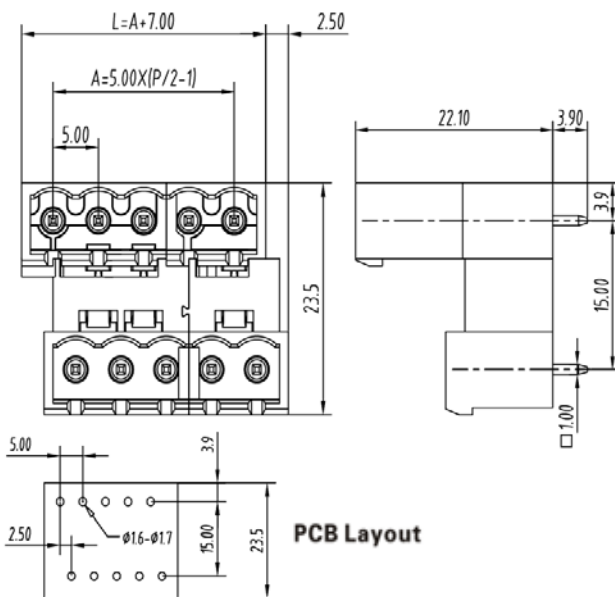


PCB Connector — TLP series (Pin header)— TLPHDC-203V



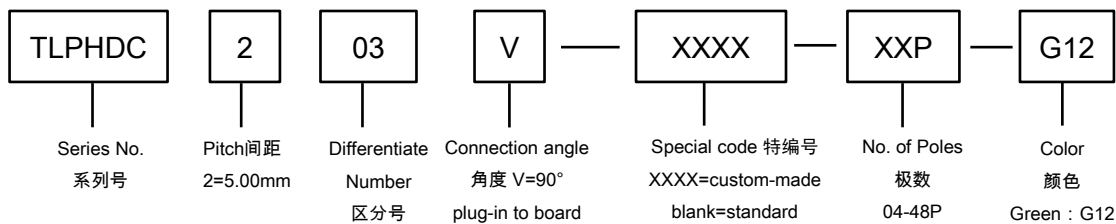
图例 (Pic. shown) : TLPHDC-203V-10P-G12

General. PCB Connector Rated : 320V, 17.5A
Single row, 5.00mm pitch, 04-48 Pole
Orientation: 90° (plug-in to board)

认证 (Approval) :

| 技术参数 Technical Data | UL standard | | | IEC standard | | |
|--|---|----|------|--|---------|--------|
| | UL Application group | | | IEC过电压别/污染等级(IEC overvoltage category /pollution degree) | | |
| UL应用组别(UL Application group) | UL Application group | | | III / 3 | | |
| IEC过电压别/污染等级(IEC overvoltage category /pollution degree) | B | C | D | III / 3 | III / 2 | II / 2 |
| 额定电压(Rated voltage) | 300V | -- | 300V | -- | 320V | -- |
| 额定电流(Rated current) | 16A | -- | 10A | -- | 17.5A | -- |
| 额定连接容量(Rated connection capacity) | -- | | | -- | | |
| 绝缘材料(Insulation Material) | PA66 | | | UL94 V-0 | | |
| 电流承载部件材料和镀层(Material & Plating of Current carrier) | Copper alloy | | | Tin plated | | |
| 接线弹片材料(Material of Clamp spring) | -- | | | -- | | |
| 绝缘电阻(Insulation Resistance) | 500MΩ or more at DC500V | | | 500MΩ or more at DC500V | | |
| 耐电压(1分钟)(Withstanding Voltage/1Min) | 2200V | | | 2200V | | |
| 额定冲击电压(Rated surge voltage) | -- | | | -- | | |
| 接线螺丝(Wire clamp unit Screw), 最大扭矩(torque Max.) | -- | | | -- | | |
| 固定螺丝(Mounting Screw), 扭矩(torque) | -- | | | -- | | |
| 剥线长度(Wire stripping length) | -- | | | -- | | |
| 使用温度(Operating temperature) | -40°C up to +105°C | | | -40°C up to +105°C | | |
| 焊接方式(Soldering recommend) | Wave soldering ,260°C 5S Max (Single Wave) , 260°C 10S Max(Double Wave) | | | | | |

订购方式(How to order)



Web: www.china-tianli.com TEL: +86-574-6347-9600, 6389-6436 Mail: sale@china-tianli.cn
地址: 中国浙江省宁波杭州湾新区庵东工业园区纬三路138号
ADD: 138, Weisan Rd., Andong Development Zone, Hangzhou Bay Area, Ningbo, Zhejiang, China

■ 编码片 Coding key



P/N:
TLPCK-003-S

■ 插头 (Female Connector) — single row



P/N : TLPS-200V
Wiring orientation :
180°(wire to plug-in)
Rated : 320V,20A , 2.5mm²
Screw clamp unit: M3.0 , 0.5Nm



P/N : TLPS-200R
Wiring orientation :
90°(wire to plug-in)
Rated : 320V,20A , 2.5mm²
Screw clamp unit: M2.5 , 0.4Nm



P/N : TLPS-200RL
Wiring orientation :
270°(wire to plug-in)
Rated : 320V,20A , 2.5mm²
Screw clamp unit: M2.5 , 0.4Nm



P/N : TLPS-201V
Wiring orientation :
180°(wire to plug-in)
Rated : 320V,12A , 2.5mm²
Spring clamp unit.