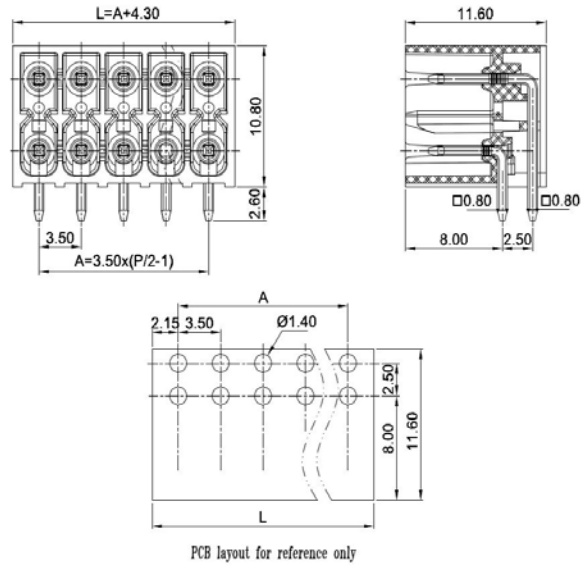


PCB Connector — TLP series (Pin header)— TLPHDC-010R-XXP-HT



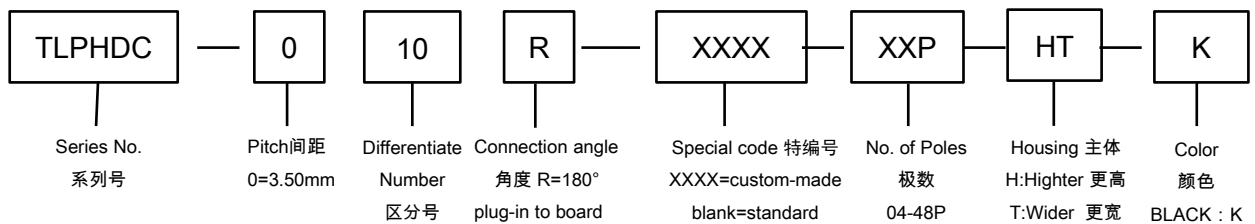
■ 图示(Pic. shown) : TLPHDC-010R-06P-HT-K

General: PCB Connector Rated : 160V,10A
Single row , 3.50mm pitch , 04-48 Pole
Orientation: 180°(plug-in to board)

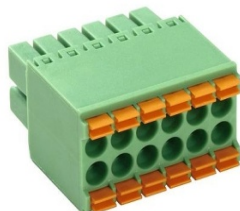
认证 (Approval) :Applying

■ 技术参数 Technical Data	UL standard			IEC standard		
	UL Application group			IEC过电压别/污染等级(IEC overvoltage category /pollution degree)		
UL应用组别(UL Application group)	UL Application group			IEC过电压别/污染等级(IEC overvoltage category /pollution degree)		
IEC过电压别/污染等级(IEC overvoltage category /pollution degree)	B	C	D	III / 3	III / 2	II / 2
额定电压(Rated voltage)	150V	50V	300V	--	160V	--
额定电流(Rated current)	8A	8A	8A	--	10A	--
额定连接容量(Rated connection capacity)	--			--		
绝缘材料(Insulation Material)				PA9T/LCP UL94 V-0		
电流承载部件材料和镀层(Material & Plating of Current carrier)				Copper alloy , Tin plated		
接线弹片材料(Material of Clamp spring)				--		
绝缘电阻(Insulation Resistance)				500MΩ or more at DC500V		
耐电压(1分钟)(Withstanding Voltage/1Min)				1600V		
额定冲击电压(Rated surge voltage)				2500V		
接线螺丝(Wire clamp unit Screw) , 最大扭矩(torque Max.)				--		
固定螺母(Mounting Nut) , 扭矩(torque)				--		
剥线长度(Wire stripping length)				--		
使用温度(Operating temperature)				-40°C up to +130°C		
焊接方式(Soldering recommend)	Wave soldering & Reflow soldering (THR) capable					

■ 订购方式(How to order)



■ 插头 (Female Connector) -dual row in 1 plane



P/N : TLPSD-010
Wiring orientation :
180°(wire to plug-in)
Rated : 160V,10A , 1.5mm²
Spring clamp unit