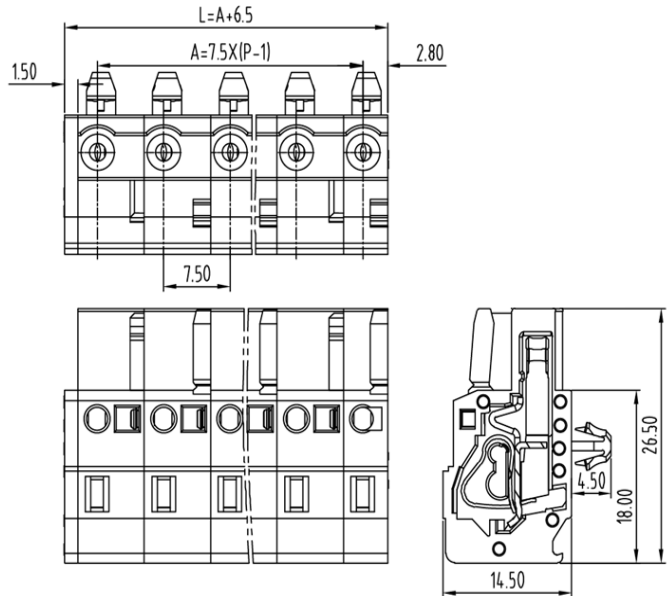
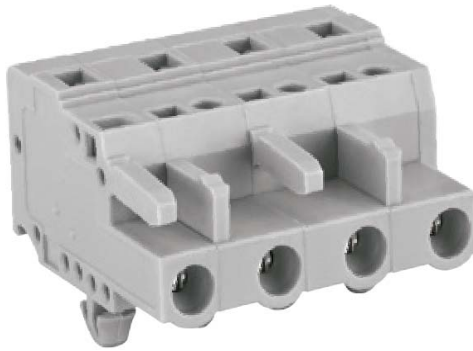


Multi Connection System — TLC series (Female Connector)— TLCP-400FA



■ 图示(Pic. shown) : TLCP-400FA-04P-B02

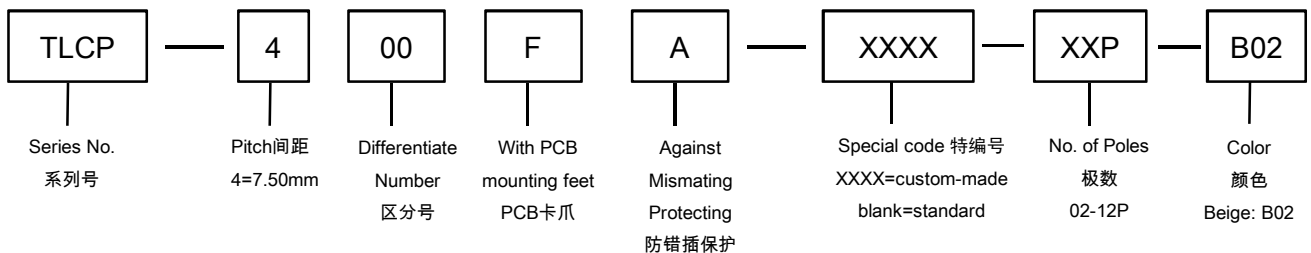
General:
 Multi Connection System Rated : 630V,20A , 2.5mm²
 Single row , 7.50mm pitch , 02-12 Pole
 Wiring orientation: 180°(wire to plug-in)
 Spring clamp unit.

认证 (Approval) :



技术参数 Technical Data	UL standard			IEC standard		
	UL应用组别(UL Application group)	UL Application group			IEC过电压别/污染等级(IEC overvoltage category /pollution degree)	
IEC过电压别/污染等级(IEC overvoltage category /pollution degree)	B	C	D	III / 3	III / 2	II / 2
额定电压(Rated voltage)	300V	--	300V	--	630V	--
额定电流(Rated current)	16A	--	10A	--	20A	--
额定连接容量(Rated connection capacity)	28-12AWG Sol&Str			0.2~2.5mm ² Sol&Str		
绝缘材料(Insulation Material)				PA66 UL94 V-0		
电流承载部件材料和镀层(Material & Plating of Current carrier)				Copper alloy , Tin plated		
接线弹片材料(Material of Clamp spring)				Stainless steel (GrNi)		
绝缘电阻(Insulation Resistance)				500MΩ or more at DC500V		
耐电压(1分钟)(Withstanding Voltage/1Min)				4200V/1Min		
额定冲击电压(Rated surge voltage)				6.0KV		
接线螺丝(Wire clamp unit Screw) , 最大扭矩(torque Max.)				--		
固定螺丝(Mounting Screw) , 扭矩(torque)				--		
剥线长度(Wire stripping length)				9.0mm		
使用温度(Operating temperature)				-40°C up to +115°C		
焊接方式(Soldering recommend)				--		

■ 订购方式(How to order)



Web:www.china-tianli.com

TEL:+86-574-6347-9600,6389-6436

Mail : sale@china-tianli.cn

地址:中国浙江省宁波杭州湾新区庵东工业园区纬三路138号

ADD : 138 , Weisan Rd.,Andong Development Zone, Hangzhou Bay Area, Ningbo, Zhejiang, China

接线操作杆 Operating lever

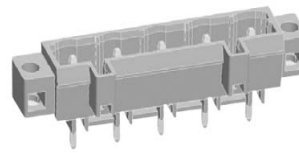


P/N:
TLC-A01

针座 (Pin header)



P/N : TLCH-400VA
Orientation :
90° (plug-in to board)
Rated:320V,20A



P/N : TLCHM-400VA
Orientation :
90° (plug-in to board)
Rated:320V,20A
With mounting flanges



P/N : TLCH-400RA
Orientation :
180° (plug-in to board)
Rated:320V,20A