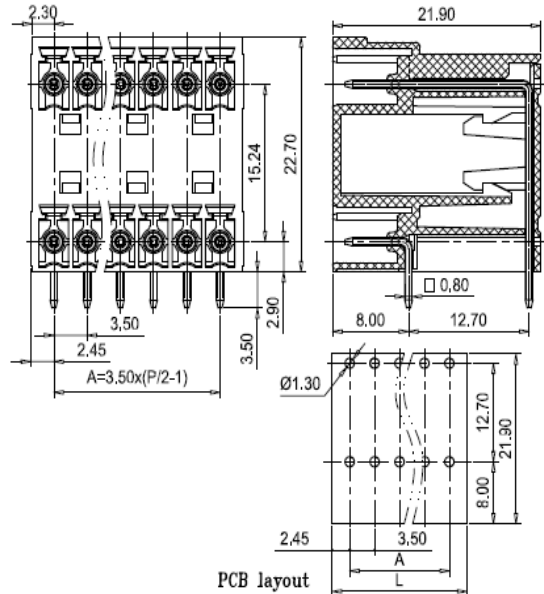


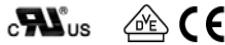
PCB Connector — TLP series ( Pin header )— TLPHDC-008R



**图示(Pic. shown) : TLPHDC-008R-14P-G12**

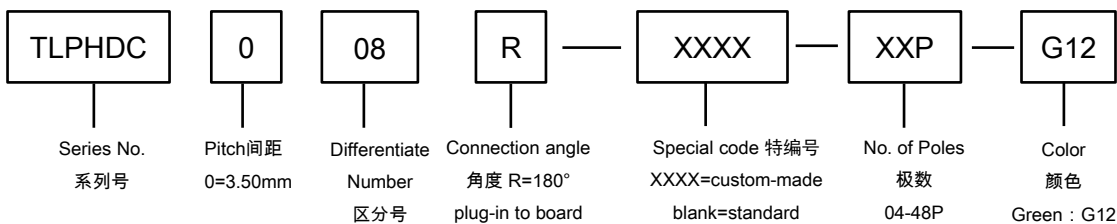
General: PCB Connector Rated : 160V,10A  
Single row , 3.50mm pitch , 04-48 Pole  
Orientation:180°(plug-in to board)

认证 ( Approval ) :



技术参数 Technical Data	UL standard			IEC standard		
	UL Application group			IEC过电压别/污染等级(IEC overvoltage category /pollution degree)		
UL应用组别(UL Application group)	UL Application group			IEC过电压别/污染等级(IEC overvoltage category /pollution degree)		
IEC过电压别/污染等级(IEC overvoltage category /pollution degree)	B	C	D	III / 3	III / 2	II / 2
额定电压(Rated voltage)	300V	--	300V	--	160V	--
额定电流(Rated current)	10A	--	10A	--	10A	--
额定连接容量(Rated connection capacity)	--			--		
绝缘材料(Insulation Material)				PA66 UL94 V-0		
电流承载部件材料和镀层( Material & Plating of Current carrier )				Copper alloy , Tin plated		
接线弹片材料(Material of Clamp spring )				--		
绝缘电阻(Insulation Resistance)				500MΩ or more at DC500V		
耐电压(1分钟)(Withstanding Voltage/1Min)				2000V		
额定冲击电压(Rated surge voltage)				--		
接线螺丝(Wire clamp unit Screw) , 最大扭矩( torque Max. )				--		
固定螺丝(Mounting Screw) , 扭矩(torque)				--		
剥线长度(Wire stripping length)						
使用温度(Operating temperature)				-40°C up to +115°C		
焊接方式(Soldering recommend)	Wave soldering ,260°C 5S Max (Single Wave) , 260°C 10S Max(Double Wave)					

**订购方式(How to order)**



Web:www.tielee.com/ TEL:+86-574-6347-9600,6389-6436 Mail : sale@china-tianli.cn  
地址:中国浙江省宁波杭州湾新区庵东工业园区纬三路138号  
ADD : 138 , Weisan Rd.,Andong Development Zone, Hangzhou Bay Area, Ningbo, Zhejiang, China

## ■ 编码片 Coding key



P/N:  
TLPCK-001-S

## ■ 插头 ( Female Connector ) — single row



P/N : TLPS-001V  
Wiring orientation :  
180°(wire to plug-in )  
Rated : 150V,10A , 1.5mm<sup>2</sup>  
Screw clamp unit: M2.0 , 0.2Nm



P/N : TLPS-001R  
Wiring orientation :  
90°(wire to plug-in )  
Rated : 160V,10A , 1.5mm<sup>2</sup>  
Screw clamp unit: M2.0 , 0.2Nm



P/N : TLPS-001RL  
Wiring orientation :  
270°(wire to plug-in )  
Rated : 160V,10A , 1.5mm<sup>2</sup>  
Screw clamp unit: M2.0 , 0.2Nm



P/N : TLPS-002V  
Wiring orientation :  
180°(wire to plug-in )  
Rated : 160V,10A , 1.5mm<sup>2</sup>  
Spring clamp unit.



P/N : TLPS-007  
Wiring orientation :  
180°(wire to plug-in )  
Rated : 160V,8A , 1.5mm<sup>2</sup>  
Spring clamp unit.



P/N : TLPS-009V  
Wiring orientation :  
90°(plug-in to board )  
Rated : 320V,10A



P/N : TLPS-009R  
Wiring orientation :  
180°(plug-in to board )  
Rated : 320V,10A